

# PRODUCT INSTALLATION GUIDE

## Saiga Fiberforce Shotgun Stock



### HARDWARE INCLUDED

[1] 6mm x 2" Machine Screw

### TOOLS NEEDED

Flat Head Screwdriver

Phillips Head Screwdriver

Allen Set



**Warning:** When handling a firearm, always follow the proper handling procedures at all times. Failure to follow these procedures could result in serious damage, injury, or death. We are not responsible for damage to property, injury, or death resulting from improper installation, misuse or modification of products. If you are not comfortable completing any of the following steps, or do not have the proper tools enlist the help of your local gunsmith. We are not responsible for components that are damaged due to improper installation.



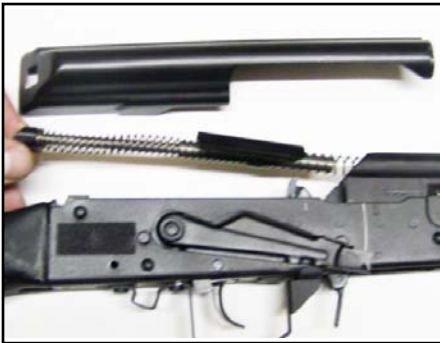
1

Note: Trigger assembly must be modified to the forward position for the installation of ATI's Fiberforce Packages. Disassemble the Saiga using your owners manual. Begin by removing the receiver cover from your Saiga as seen in Figure 1.



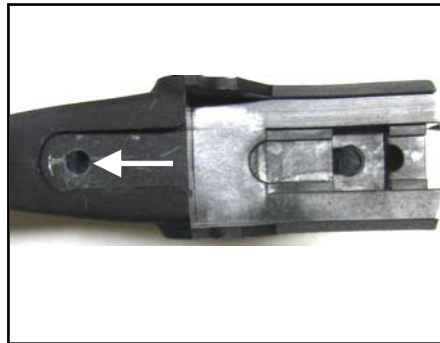
4

Next, remove the pivot assembly and start drilling a pilot hole in the center of the marked hole with a 1/16" starter drill bit as seen in Figure 4.



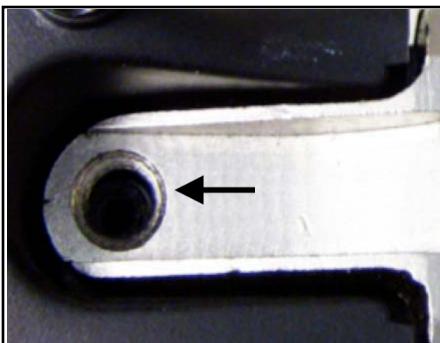
2

Remove the recoil spring from the shotgun as seen in Figure 2. Place both the recoil spring and the receiver cover aside for later installation.



5

Move up to the 3/16" drill bit and drill a wider hole using the already drilled pilot hole as seen in Figure 5.



3

Begin by placing the pivot housing assembly into the receiver. With the pivot housing assembly in the receiver, mark the tang hole using a marker as seen in Figure 3.



6

Insert the original tang screw into the pre-drilled hole on the fiberforce stock, and then tighten using a phillips head screwdriver as seen in Figure 6.

# PRODUCT INSTALLATION GUIDE

Saiga Fiberforce Shotgun Stock

PAGE 2



7

Insert the provided 6mm x 2" machine screw grip bolt through the bottom of the grip handle and tighten until the stock is completely secure to the firearm as seen in Figure 7.



8

Reinstall the recoil spring as seen in Figure 8.



9

Reinstall the receiver cover as seen in Figure 9 to complete your installation.